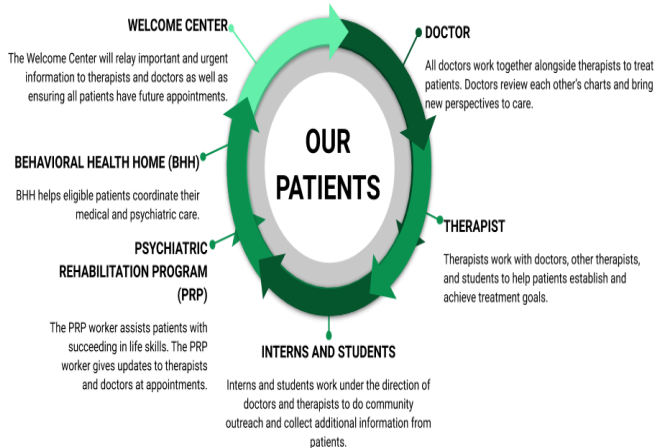


How can a Health Home help YOU?

In addition to your primary therapist and PRP worker, a Health Home can help you in many ways, including:

- Scheduling Medical Appointments
- Referrals to Specialists
- Smoking Cessation
- Diabetes Control
- Transitional Care

COMMUNITY BEHAVIORAL HEALTH PRACTICES COLLABORATIVE CARE FOR ALL PATIENTS



Health Home Enrollment

If you already receive mental health services from Community Behavioral Health, and are also receiving services from the Psychiatric Rehabilitation Program (PRP), you may be eligible to enroll in the Health Home program.

To learn more about Health Home, contact the Health Home Care Manager:

Kasey Barlow at
(844) 844-5264 ext 3

Salisbury
821 Eastern Shore Dr
Salisbury, MD 21804

Cambridge
426 Dorchester Ave
Cambridge, MD 21613

Centreville
202 Coursevall Drive #107
Centreville, MD 21617

Chestertown
970 Washington Street
Chestertown, MD 21620

Columbia
10774 Hickory Ridge Road
Columbia, MD 21044

Easton
8614 Ocean Gateway
Easton, MD 21601

Princess Anne
30149 Prince William Street
Princess Anne MD, 21853

Snow Hill
107 East Market Street
Snow Hill MD 21863

1140 Blades Farm Rd
Denton, MD 21629



Administrative Office
821 Eastern Shore Drive Suite A
Salisbury, MD 21804
Tel 1-844-224-5264
www.communitybehavioralhealth.net

Behavioral Health Home Program



What is a Health Home?

- Your Psychiatrist and Therapist will refer you to Behavioral Health Home Services for comprehensive care coordination services.
- The State of Maryland approves patients that have Medicaid only as insurance and are currently enrolled in PRP services.
- Behavioral Health Home program helps you manage your psychiatric AND medical care to improve your overall wellness.
- A Health Home will connect you with providers and resources to achieve your overall wellness goals.

Health Homes use a whole-person approach to care.



Health Home Services

Comprehensive Care Management

- You and your provider will create your Care Plan.
- You will set goals and address challenges in your behavioral health AND physical health needs.

Care Coordination

- You will have one location to help you coordinate most of your services and support.
- Your Health Home will help you make appointments and connect you to appropriate specialty care providers.

Health Promotion

- You will work with your provider to gain knowledge about your overall wellness.
- You will have access to support and training specific to your needs, to address your chronic health challenges.



Health Home Services, cont'd

Comprehensive Transitional Care

- You may need help if you receive treatment in a hospital or other inpatient facility.
- Your Health Home will help you as you transition to different levels of care.

Individual & Family Support

- You will have support to manage your health.
- Your Health Home will help you to live to your full potential in your community.

Community & Social Support Referral

- You will have connections to a wide range of programs in your community.
- Your Health Home can help you access services and programs to promote your health and well being.



